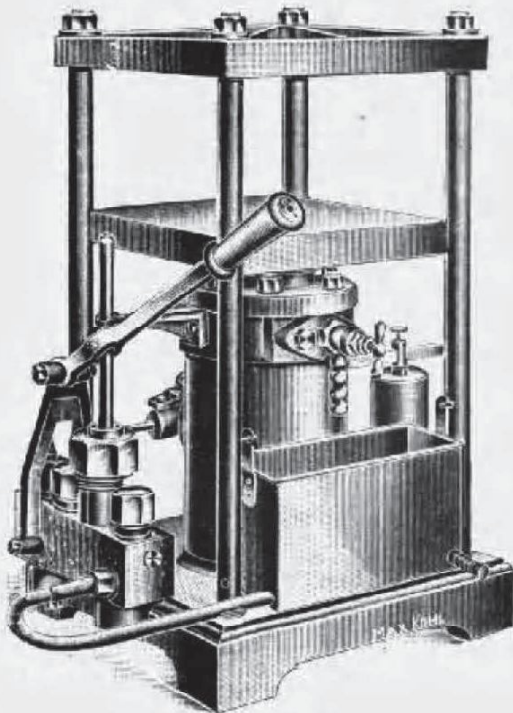
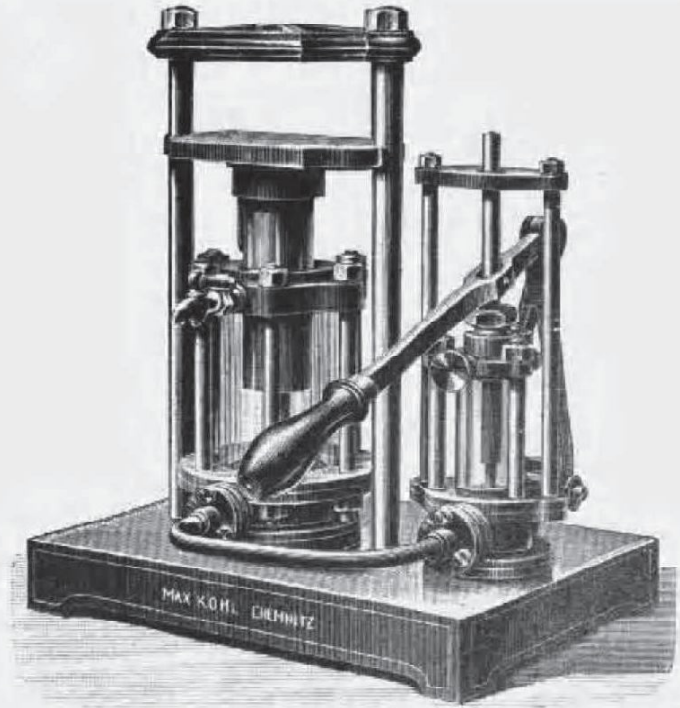


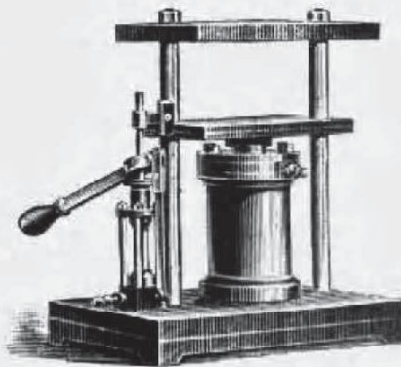
Max Kohl A. G. Chemnitz, Germany.



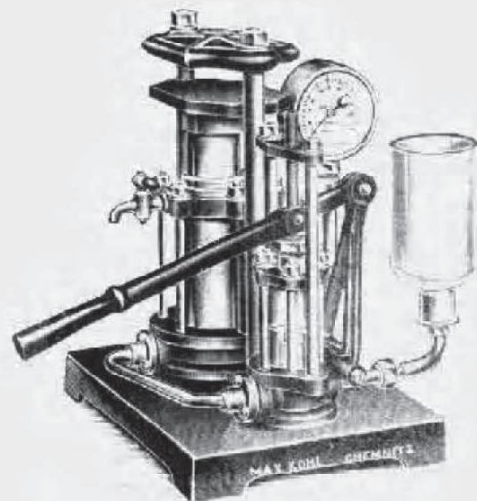
52 461. 1:6.



52 465. 1:4.



52 463. 1:7.



52 466. 1:8.

	f s. d.
52,460. Flat Sheet Iron Box, for storing the rubber cushion (W. D., p. 148)	0. 8. 0
52,461. Hydraulic Press, Figure (W. D., Fig. 107 [96]), massively constructed of iron and steel; valves fitted, so as to be detachable, in special valve chambers, giving 3000 kg pressure, with safety valve for 60 atmospheres	12. 0. 0
The ram has a cross-section of 50 sq. cm; each atmosphere of pressure thus corresponds to a 50 kg pressure. The press has an efficiency of 60 ats., which is equivalent to 3000 kg pressure.	
52,462. — idem, with Pressure Gauge	14. 10. 0
52,463. Hydraulic Press, of metal, for a pressure of 1500 kg, Figure	8. 10. 0
52,464. — idem, with Pressure Gauge	11. 0. 0
52,465. Hydraulic Press with Glass Cylinder and visible valves, Figure, with safety valve for 25 Atm., for preventing bursting of the cylinder, for 500 kg pressure	8. 0. 0
52,466. — idem, with Pressure Gauge, Figure	10. 10. 0